

The
G.M.A.C.
CHALLENGE CUP
FINAL

HORWICH R.M.I.

v

WEYMOUTH



SUNDAY 8th MAY 1988

Kick-Off 3.00 p.m.



MATCH SPONSOR
KIRKBY CENTRAL BOLTON

OFFICIAL SOUVENIR PROGRAMME

50p

The
GMAC
CHALLENGE
CUP

RATE THE MATCH
THEN
MATCH THE RATE
AT YOUR LOCAL GENERAL MOTORS DEALER

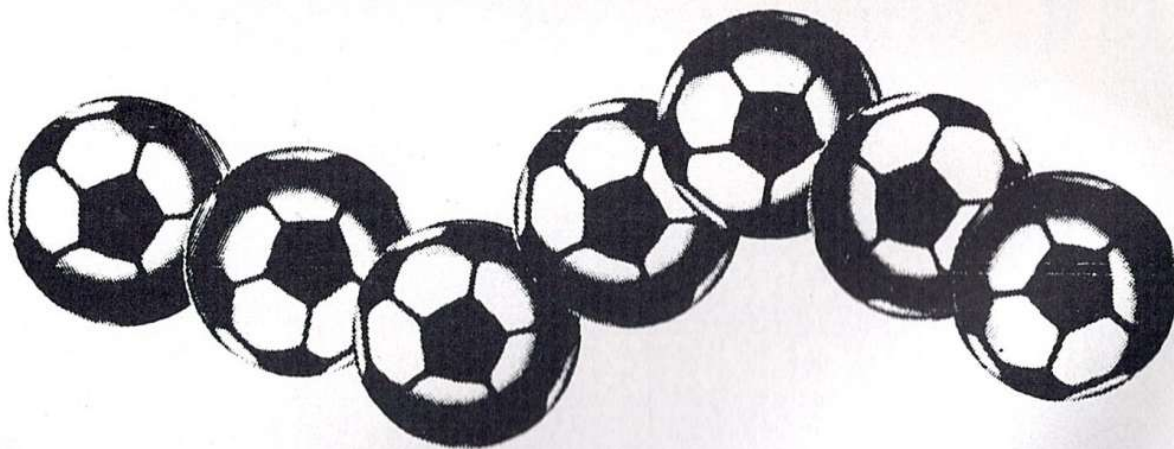


The financial services people from General Motors



GENERAL MOTORS ACCEPTANCE CORPORATION

**The world's major provider of Instalment Credit Facilities to
The General Motors Dealer Organisation and their customers!**



THE G.M.A.C. CHALLENGE CUP

On behalf of the Joint Liaison Committee of The G.M. Vauxhall Conference, The Beazer Homes League, The Northern Premier League and The Vauxhall Opel League, I congratulate Horwich and Weymouth on reaching the Final. Whilst it would have been nice to play the Final on a neutral ground, with the long travelling distance between the two clubs, it was, agreed to accept the toss of a coin to decide the venue.

This is only the second season in which the Bob Lord Challenge Trophy has been competed for by the top 88 clubs in Non-League Football. Unfortunately, our present sponsors The General Motors Acceptance Corporation (U.K.) Ltd. are not continuing the sponsorship next season. However, we are very grateful to the Company for their support in the two inaugural seasons. In particular we must thank Director Mr. Phil Poulton for his interest and support. He will in fact be presenting the Cup and the Trophies to the winners and runners-up today.

We extend our thanks to all at Horwich Football Club who have worked hard to make all the arrangements to stage the match. We hope that the players, team officials, match officials and the supporters see a good game and have an enjoyable afternoon.

Peter Hunter
(Secretary)

A MESSAGE FROM THE HORWICH R.M.I. CHAIRMAN

Today Horwich R.M.I. Football Club will play their most prestigious fixture in its long history, the final of the G.M.A.C. Cup. The competition is open to the eighty eight clubs representing The G.M. Vauxhall Conference, The Vauxhall Opel League, The Beazer Homes League and The Northern Premier League (Premier Division). Manager Les Rigby, his assistant Alan Kirkman and the playing staff must be congratulated on reaching the final, the road to which started way back in September with an away tie at South Liverpool. The feat is even more remarkable when you realise that Mr. Rigby only took over the reigns as Manager in February 1987 at a time when R.M.I. was at its lowest ebb ever on the playing field.

The G.M.A.C. Cup has given management, players and spectators alike, the opportunity to see opponents from the G.M. Vauxhall Conference as we disposed of Altrincham, Northwich Victoria and Enfield on the way to today's final.

We at R.M.I. take pleasure in welcoming our sponsors, General Motors Acceptance Corporation, the directors, players and supporters of Weymouth F.C. and hope that the game turns out to be a spectacle worthy of such an occasion.

CHRIS HEALEY

WALMSLEYS INSURANCE LTD.

The Professional Insurance Broking Service

**Commercial and Business Risks
Motor Quotations
Personal Insurances
Life Assurance and Pensions**

**WALMSLEY HOUSE, 35 DICCONSON STREET,
WIGAN, WN1 2AS.**

Telephone: Wigan (0942) 43455

Member of
**THE BRITISH
INSURANCE
BROKERS
ASSOCIATION**



papillon

Ladies
Exclusive Fashions

Craven House, Lee Lane
HORWICH Tel: 694815

TRIDENT DOOR SERVICES

REMOTE CONTROL SPECIALISTS

BOLTON 591983

LES, KATH & THE CUSTOMERS
THE ALBERT ARMS

114 LEE LANE
HORWICH Tel: 696397

Andrew Leach

Your Local Sports Outfitter
Tel: HORWICH (0204) 697624

CONGRATULATIONS
TO
HORWICH R.M.I.
ON REACHING THE
G.M.A.C. CUP FINAL

F. HARRISON & SONS

SHOE REPAIRS

67 Lee Lane
HORWICH Tel: 694464

Harrison's

Florist - House Plant Specialists

97 Lee Lane, HORWICH Tel: (0204) 697924 or 697871

WISWELL BROS.

JOINERS

96, Clipsley Lane, Haydock
Tel: St. Helens (0744) 25278

CROWN CAR SALES

Quality Used Cars
Proprietor **KEN JONES**
Chorley New Road
HORWICH Tel: 66702

A MESSAGE FROM THE HORWICH R.M.I. MANAGER

Welcome to the players, officials and supporters of Weymouth to Grundy Hill for the final of this very prestigious competition.

After their palatial facilities it may come as something of a shock to see our stadium but I am sure they will appreciate that we will do all we can to make their visit a memorable one in terms of hospitality. This will only apply to 'off-the-field' activities as Stuart Morgan, Weymouth's Manager will appreciate.

We expect a hard tie but having entered the competition in the Preliminary Round - away to South Liverpool - we are getting quite battle hardened and will do all we can to lift the Trophy for Horwich and the N.P.L.

The team have performed splendidly to reach the final and I wish them all well for today's game. Get behind us and we will do our best for you.

We hope to bring you many more 'big games' in the years ahead.

LES RIGBY



Photo by Alan Leach

Horwich R.M.I. striker Faz Page the man of the match in the G.M.A.C. Cup Semi-Final win over Enfield receiving his award from Mr. Mike Anderson of match sponsors Kirkby Central. Right is Mr. Jim Barton of club sponsors Office Equipment World Ltd.

H. SAMSON (BOLTON) LTD.

Motor Body Repairers and Refinishers



- All types of Insurance work carried out and fully guaranteed.
- Spray-bake oven facility.

- Recommended Repairs for most of the major insurance companies.
- First class resprays undertaken.

H. SAMSON (BOLTON) LTD.

Motor Body Repairers and Refinishers

238 WATERLOO STREET, BOLTON BL1 8HU

Telephone: (0204) 26370



Folds Road, Bolton BL1 2SW
Tel: Bolton 25511 (6 lines)

Davidsons Waste Paper

We require all grades of waste paper from commercial premises

Destruction of confidential data now carried out at our new branch sited at:

**Missouri Ave,
Weaste,
Salford.**

Tel: 061-745-7133.

LEIGH ENVIRONMENTAL LTD.

- DRY & WET WASTES
- TOXIC, NON-TOXIC, EFFLUENTS & SLUDGES
- HAZARDOUS DRUMS, CHEMICALS
- SOLVENT RECOVERY
- INHOUSE TREATMENT PLANTS
- FULL SCIENTIFIC BACK UP
- INDUSTRIAL & DOMESTIC DRY WASTES
- OPEN AND SEALED CONTAINERS FROM 6-35 cu yds
- LICENSED LANDFILL SITES
- ASBESTOS REMOVAL / DISPOSAL
- 24 HOUR EMERGENCY SERVICES

COMPLETE DISPOSAL SERVICE FOR TOXIC & NON-TOXIC WASTES

061 - 494 - 1325

STUART ROAD, BREDBURY, STOCKPORT

If waste is the problem

Leigh

has the answer

HORWICH R.M.I. SEASON 1987 / 88



Photo courtesy of the Bolton Evening News

**Back Row - Mark Henshaw, Neil McLachlan, Faz Page, Michael Allison,
Lee Howarth, Glen Walker, Micky Moore, Mark Schofield.**

**Front Row - Ian Rennox, Jimmy Mitchell, Chris Walmsley, Brian Hart,
Paul Booth, Ian Street, Jon Senior, Andy Gibbons.**

BURCUL LTD

Manufacturers and Installers of:-

**DOUBLE GLAZED REPLACEMENT WINDOWS AND DOORS In
u.P.V.C. - ALUMINIUM - MAHOGANY**

SECURITY SHUTTERS - SHOP FRONTS - SECONDARY GLAZING

Showroom and Works

DARBY LANE

HINDLEY

Tel: Wigan (0942) 59211

Open 7 Days Saturday / Sunday 11.00 a.m. - 3.00 p.m.

HORWICH R.M.I. PEN PICTURES

HORWICH R.M.I. are managed by the experienced **LES RIGBY**. He joined the club last season after earlier experience as manager of Wigan Athletic, Rossendale United, Chorley and Morecambe.

MIKE ALLISON: A goalkeeper who has progressed from the club's reserve side and has been a regular in the first team for three seasons. Mike has attracted the attention of Football League clubs and had a trial with Grimsby Town.

BRIAN HART: An experienced defender and Horwich's club captain. After an apprenticeship with Bolton Wanderers he joined Rochdale and later played for Bangor City, Hyde United and Mossley.

JIMMY MITCHELL: Joined the club this season from Runcorn. Previously was full time with Wigan Athletic. Spent a month this season with Liverpool.

PAUL BOOTH: Joined Horwich last season after being released by Bolton Wanderers and playing regularly in Preston's Central League side.

LEE HOWARTH: Lee is in his second season with Horwich since signing from Blackpool, he spent the summer playing in America.

MARK SCHOFIELD: Signed from Wigan Athletic in the close season and plays at the heart of the Horwich defence.

JON SENIOR: A young close season signing who has spent the last two seasons with Bolton Wanderers.

CHRIS WALMSLEY: Chris is now in his second season with Horwich since signing from North West Counties League side Daisy Hill.

PHIL POWER: A former Northwich Victoria player who joined Horwich in the close season after being full time at Crewe Alexandra for the last two seasons.

DUNCAN PODMORE: Joined Horwich last season from Daisy Hill, he is a young striker who has shown plenty of ability.

FAZ PAGE: Brother of Runcorn striker Don Page, Faz signed in the summer from Radcliffe Borough and has also played for Mossley and Northwich Victoria.

MICKY MOORE: Played League football for Port Vale. He has also played for Wigan Athletic, Barrow, Southport and in the United States for Dallas.

NEIL McLACHLAN: An experienced player now in his second spell with Horwich. He has also played for Morecambe and Chorley.

IAN STREET: Joined the club this year from Chorley. Has been impressive in his games so far.

MARK HENSHAW: After a serious leg injury Mark has joined the club from Blackburn Rovers. At 19 he looks to be one for the future.

ANDY GIBBONS: Product of the clubs youth system. He has made several useful contributions to the club's first team.

IAN RENNOX: Joined the club from Wigan Athletic. A tenacious player who has shown loyalty to the club in waiting for his limited first team appearances.

MICHAEL SEDDON: Joined the club from a junior side in Leyland. Scored twice on his debut. At 19 another useful player for the future.

A MESSAGE FROM THE CHAIRMAN OF THE N.P.L.

Good afternoon and welcome to all the football supporters who are here today to support their teams in the final of the prestigious G.M.A.C. Cup. I would particularly like to congratulate both clubs Weymouth and Horwich on reaching this stage of the competition, I am sure that it will be a keenly contested match whatever the result. I look forward to the match being played in a sporting manner with both sets of players and supporters being a credit to The Vauxhall Conference and The Northern Premier League so upholding the high traditions of both leagues.

Over the past few years non-league football has made vast strides and the clubs in all the senior non-leagues are now integrated in cup competitions, this must be good for the game when we continually meet new teams from different leagues and make many new friends through our great national game.

Our visitors to Horwich today will include officials from The Vauxhall Conference, Vauxhall Opel League, Lancashire F.A. and our sponsors General Motors Acceptance Corporation who we thank most sincerely for their valuable and continued support, we welcome them all.

I hope you have an enjoyable afternoon, witness a sporting game and may the best team win.

KEN MARSDEN

LEYLAND METAL Co. Ltd.

*Scrap Metal Merchants
Processors & Smelters*

STATION YARD, GOLDEN HILL
LEYLAND PR5 2NN
Tel: (0772) 422166

**SPECIALISTS IN
WORKS CLEARANCES
CONTAINER SERVICE**

A Cookson Group Company

HORWICH R.M.I. FOOTBALL CLUB

HORWICH R.M.I. Football Club was formed in 1896 after the old Lancashire and Yorkshire Railway Company had decided to construct a large locomotive works at Horwich and overnight a small village was transformed into a sizeable town.

In the early part of the century the Horwich Club played their football in the West Lancashire League. They were champions twice in the 1910-11 and 1913-14 seasons, and in 1915 they were accepted members of the more senior Lancashire Combination. Horwich soon settled in their new surroundings and by the 20's they were a force to be reckoned with. They were Lancashire Junior Cup winners in 1924-25 and 1929-30 and were Combination Cup winners in 1927-28. The 152 goals in the 1928-29 season was the highest ever scored by a Lancashire Combination team.

Horwich could not add to these successes in the 30's and just after the Second World War they suffered the indignity of a spell in Division Two. They were promoted back into the First Division in 1951 and had another good run of success. In 1953-54 and 1956-57 they were Combination Cup winners and in the 1957-58 season - for the only time in their history - they were Lancashire Combination Champions. Over the next ten seasons Horwich were usually found in the top half of the table and in 1968 they declined a place in the newly formed Northern Premier League, despite qualifying to do so, and they instead opted for a move to the Cheshire County League.

In the early 70's Horwich went through a rough patch which saw them finish near the bottom of the League on two occasions. They were soon able to recover and a few years later they were back as one of the leading Cheshire League Clubs. In the 1978-79 season they ran out Cheshire League Champions and Challenge Shield Winners, in the 1981-82 season they qualified for membership of the North West Counties League.

In their first season in the League they finished in the bottom half of the table, but then finished in third place and made application to join the Northern Premier League which was successful. The first season in the N.P.L. was a successful one for the club. The team finished in 8th place in the final league table and qualified for the Presidents Cup.

Horwich are nicknamed the "Railwaymen". They play at Grundy Hill, their home ground for over 70 years.

LEACH, BRIELY & Co.

Accountants

Craven House,
32 Lee Lane,
Horwich,
Bolton, BL6 7BY.

Tel: (0204) 699656

Bolton Hemming Limited

FIRST-CLASS COMMISSION SERVICE

*We manufacture a wide range of
household textile products including:*

**DUVET COVERS
VALANCES
FITTED SHEETS
PLAIN HEMMED SHEETS
PRIMARY CASES FOR QUILTS
AND PILLOWCASES**

*Expertly made to your Specification
Inclusive of Packaging, Storage and
Distribution.*

FOR FURTHER INFORMATION TELEPHONE

BOLTON: 492614/5

TELEX 635760

BOLTON HEMMING LIMITED

Halliwell Industrial Estate, Wapping St.,

Halliwell, Bolton. BL1 8DP

Telex No: 635109 Chamcon G

Prefix Bolton Hemming

STONES & HUTCHINSON LTD.

**Householders
Get rid of that bulky
rubbish with our
fast efficient
container service**

TAKE ME TO YOUR RUBBISH

W.O.W. War on Waste

EST. 1924

228 WATERLOO STREET, BOLTON BL1 8HL

Tel: BOLTON 386201/2



GRUNDY & PILLING LTD.

BUILDERS & PLUMBERS SUPPLIERS

*We've got it
in for you !*



**ARTIFICIAL STONE-BRICKS
CEMENT - FENCING - FIBREGLASS
PATIO FLAGS & SCREEN BLOCKS
PROPANE GAS - ROOFING MATERIAL
TIMBER - MANUFACTURED JOINERY**

OPEN

Monday - Friday

8.00 a.m. - 12.15 p.m.

12.45 p.m. - 5.00 p.m.

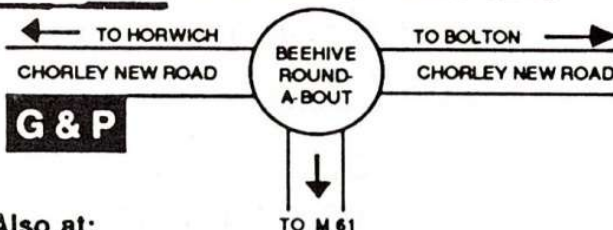
Saturday

8.00 a.m. - 12.00 p.m.

- EXPERT ADVICE
- 24 HOUR DELIVERY
- MECHANICAL LOADING &
OFF-LOADING FACILITIES

**HORWICH
699331**

**CHORLEY NEW ROAD
HORWICH BL6 6DU**



Also at:

Ashton-in-Makerfield Tel: (0942) 720966

Eccles Tel: 061-789-2631

Chester Tel: (0244) 379974

Direct Sales Tel: 061-788-8733

**ACTION FROM THE SEMI-FINAL TIE
HORWICH R.M.I. v ENFIELD**



Photo by Alan Leach

**WM. HARGREAVES
LIMITED**

Building Contractors

* * *

**EMLYN STREET
FARNWORTH
LANCS.**

Tel: (0204) 76391

J.M. Hitchen Limited

Harpers Lane Works,
Chorley
Lancashire

Tel: Chorley (025 72) 62261-2

**Stockholders of New & Re-usable
Angles, Channels, Joists, Plates,
Bars & Tubes. Ferrous & Non-
Ferrous Metals Bought for Cash.
Works Clearance & Container
Service a Speciality**

HORWICH R.M.I. SEASON 1987-88

Date		Opponents	Venue	E	A	Attendance	Scorers
1987							
August	22	Matlock Town	A	4	0	380	Page (3), Haslam
	24	Barrow	H	1	1	380	Haslam
	29	Frickley Athletic	H	1	2	319	Schofield
	31	Southport	A	0	1	420	
Sept.	5	Workshop Town	H	2	0	241	Walker, Hulme
	9	G.M.A.C. Cup Q.Rd. S. Liverpool	A	1	1	135	Power
	12	F.A. Cup 1st. Q.Rd. S. Liverpool	H	1	1	192	Page
	16	F.A. Cup Replay S.Liverpool	A	4	3	170	Power (2), Walker (2 - 1 pen.)
	19	Gainsborough Trinity	A	0	1	176	
	21	G.M.A.C. Cup Replay S. Liverpool	H	2	1	225	Hulme, own goal
	26	F.A. Cup 2nd Q. Rd. St. Helens	A	0	0	156	
	29	F.A. Cup Replay St. Helens	H	2	3	307	Haslam, Page
October	3	F.A. Trophy 1st Q.Rd. S. Liverpool	H	1	2	173	Walmsley
	7	G.M.A.C. Cup 1st Rd. Workington	A	2	1	166	Rodgers, Page
	10	Workington	H	2	0	219	Hulme, McLachlan
	14	Workington	A	2	2	190	Walker (pen), Page
	17	Bangor City	H	3	2	273	own goal, Podmore, Walker
	19	Caernarfon Town	H	0	1	319	
	24	Morecambe	A	2	3	450	Podmore, Page
	26	Goole Town	H	0	2	248	
Nov.	4	G.M.A.C. Cup 2nd. Round Marine	H	1	0	207	Podmore
	7	Gateshead	A	0	1	150	
	11	Caernarfon Town	A	4	2	212	Schofield (2), Power, Rodgers
	14	South Liverpool	H	1	2	202	Page
	16	Marine	H	0	0	198	
	21	Bangor City	A	0	0	331	
	25	L.C.T. Burscough	A	1	0	96	Walmsley
	28	Mossley	H	1	0	186	Walker
Dec.	1	G.M.A.C. Cup 3rd Rd. Altrincham	A	2	1	674	Page, Power
	5	Oswestry Town	A	3	2	238	Walker, Power, own goal
	7	Rhyl	H	0	0	227	
	12	Gainsborough Trinity	H	1	0	187	Fielding
	26	Mossley	A	2	0	245	Page (2)
	28	Chorley	H	0	1	826	
1988							
Jan.	9	N.P.L. Cup 1st Rd. Eastwood H.	A	1	0	35	Walmsley
	16	Matlock Town	H	2	0	207	Power (2)
	20	L.F.T. Leyland Motors	H	1	3	109	Howarth
	30	L.C.T. 2nd Rd. City of Lancaster	H	2	3	153	Walker, Walmsley
Feb.	9	G.M.A.C. Cup Q.Final Northwich	A	1	1	220	Rodgers
	13	Marine	A	0	1	240	
	20	N.P.L. Cup 2nd Round Bangor C.	A	0	3	293	
	23	G.M.A.C. Cup Q.F.Replay Northwich	H	3	2	336	Page, Howarth (pen), Hart
	27	Oswestry Town	H	2	1	205	Mitchell, Walker
March	1	Buxton	A	1	2	260	Moore
	5	Hyde United	A	0	2	410	
	12	Witton Albion	A	1	0	330	Street
	15	Goole	A	1	1	215	Walker
	17	L.F.T. City of Lancaster	H	5	0	112	Page (2), Seddon (2), Senior
	21	Hyde Utd.	H	1	4	339	McLachlan
	26	Barrow	A	0	2	892	
	27	G.M.A.C. Cup Semi-Final Enfield	H	3	1	822	Page (2), Walker
	30	L.F.T. Leyland	A	1	0	100	Walmsley
April	2	Workshop Town	A	2	1	260	McLachlan, Page.
	4	Frickley Athletic	A	0	0	350	
	6	Morecambe	H	0	1	259	
	9	Witton Albion	H	1	0	206	Senior
	11	Southport	H	1	1	234	McLachlan
	16	Gateshead	H	2	1	249	Walmsley, Street.
	18	Chorley	A	0	1	780	
	20	L.F.T. Barrow	A	5	3	200	Power (2) Page,
	21	L.F.T. Lancaster	A	2	1	100	Hart, McLachlan
	23	Rhyl	A	1	0	250	Howarth
	27	South Liverpool	A	1	1	150	McLachlan
	29	Buxton	H	1	0	174	Walker

T. WRIGHT LTD.



VINE HOUSE,
CHORLEY NEW ROAD,
HORWICH.



Telephone: (0204) 695513

***WHOLESALE
CASH AND CARRY
WINES AND SPIRITS***

SUPPLIERS TO

**HORWICH R.M.I.
SOCIAL CLUB**

ROUTE TO THE FINAL

HORWICH R.M.I.

Round	Opponents	Score	Alt.	Goalscorers
Qualifying	South Liverpool (A)	1-1	135	Power
Qualifying (Replay)	South Liverpool (H)	2-1	244	Hulme, Own Goal
1st Round	Wokington (A)	2-1	166	Rodgers, Page
2nd Round	Marine (H)	1-0	207	Podmore
3rd Round	Altrincham (A)	2-1	673	Power, Page
Quarter Final	Northwich Victoria (A)	1-1	220	Rodgers
Quarter Final (Replay)	Northwich Victoria (H)	3-2	336	Hart, Howarth (pen), Page
Semi-Final	Enfield (H)	3-1	822	Page (2), Walker

WEYMOUTH

Round	Opponents	Score	Alt.	Goalscorers
1st Round	Dorchester Town (A)	1-1	1000	Lewis
1st Round (Replay)	Dorchester Town (H)	2-1	1219	Roberts, Turrell
2nd Round	Bath City (A)	5-1	368	Compton, Claridge (2), Rowland, Lewis
3rd Round	Harrow Borough (H)	2-0	850	Compton, Claridge
Quarter Final	Welling United (A)	2-0	610	Compton, Claridge
Semi-Final	Morecambe (A)	2-1	809	Lewis, Own Goal

Qualifying Round	Alt.	1st Round	Alt.
Barking	0-1	Bromley	115
Dulwich Hamlet	0-2	Farnborough Town	158
Hayes	2-2	Bishops Cleeve	269
Bishops Cleeve	1-2	Hayes	257
Leyton-Wingate	5-1	Hitchin Town	152
St. Albans City	1-2	Leytonstone Ilford	298
Windsor & Eton	0-2	Basingstoke Town	133
Wokingham Town	1-0	Carlisle Athletic	205
Buxton	3-2	Kingscliff	319
Caernarfon Town	2-0	Frickley Athletic	248
Chorley	2-3	Southport	253
Marine	1-0	Mallock Town	267
Mossley	0-1	Barrow	205
Rhyl	1-0	Hyde United	432
South Liverpool	1-1	Bangor City	567
HORWICH R.M.I.	2-1	HORWICH R.M.I.	135
Wotton Albion	4-0	Gainsborough Trinity	327
Burnton Albion	2-2	Worcester City	789
Worcester City	6-2	Burnton Albion	587
Corby Town	2-1	Redditch United	172
Gosport Borough	2-2	Crawley Town	180
Crawley Town	2-3	Gosport Borough	224
Dorchester Town	2-1	Farnham Town	222
Shephed C.	0-1	Leicester United	326
V.S. Rugby	5-0	Alvechurch	448
Willeshall Town	2-3	Bedworth United	171
Witley Town	1-2	Ashford Town	171

2nd Round	Alt.
Bath City	1171
Boston United	602
Dagenham	1161
Harrow Borough	301
Dartford	377
Goole Town	643
Morecambe	329
HORWICH R.M.I.	719
Lincoln City	93
Macclesfield Town	250
Maidstone United	363
Northwich Victoria	1000
Slough Town	1219
Stafford Rangers	415
Sutton United	516
Telford United	546
Welling United	110
Yeovil Town	184
Weymouth	403
Weymouth	818

3rd Round	Alt.
Altrincham	622
Enfield	240
Kettering Town	184
Morecambe	1296
Sutton United	281
Telford United	424
Welling United	454
Weymouth	250

Quarter Final	Alt.
Enfield	510
Sutton United	454
Northwich Victoria	220
HORWICH R.M.I.	336
Morecambe	719
Telford United	1310
Welling United	610

The final today will be played to a finish. If the scores are level at the end of 90 minutes extra time of 15 minutes each way will be played. If there is still no result after this period the winners will be decided by penalty kicks.

WEYMOUTH CLUB HISTORY

The club was founded in 1890, but did not venture into senior football until 1907, when they joined the Western League. By that time, however, the Terras (from the terra cotta shirts) had already established something of a reputation by winning the Dorset Senior Cup on four occasions.

After claiming a Western League Championship and Dorset Senior Cup double at the end of the 1922/23 season, Weymouth decided to join the Southern League, but found the going tough and after five years reverted back to the Western League.

Success continued as the club won the Western League Second Division championship three times in five years during the mid thirties, but did not move up as promotion was not automatic. Around this time the club gained a record which they are unlikely to ever better. Between 1935 and 1938 they played 52 consecutive home matches without defeat, including 48 victories and only 4 draws. They also scored over 250 goals in the process at an average of five per game.

After the war the club were forced to reform as the ground had been taken over by the Army and the club had no assets. Supporters rallied round and an issue of 4,000 shares of 50p were soon snapped up. Starting in the Western League Second Division promotion was immediately achieved, followed by third place in the First Division and election to the Southern League for season 1949/50, where the club stayed until election to the Alliance League. The club has the proud boast of never being relegated. Southern League championships were recorded in seasons 1964/65 and 1965/66, and the Southern League Cup was won in 1973. In 1950 the club reached the Fourth Round of the F.A. Cup losing away to Manchester United 4-0. This stage was again reached in 1961 with eventual defeat at Preston. In 1982 the club reached the Third Round being beaten 1-0 at Cambridge United. The League sides of Aldershot, Shrewsbury, Newport, and Cardiff City have been beaten in F.A. Cup Ties.

In their first season in the Alliance League Weymouth finished Runners-up to Altrincham, and won the Bob Lord Trophy in 1982 defeating Enfield 6-4 on aggregate.

At the end of last season the club left the Recreation Ground to move into a brand new purpose built stadium holding 10,000 with an 850 seater grandstand and cover on three sides. The four pylon floodlights are up to European Cup standards and in the Summer the remaining side of the ground will be covered. Since this move attendances have doubled to an average of 1,500 with a top crowd of 3,522 for the visit of Lincoln. For the official ground opening Manchester United's full League side were defeated 1-0 before a crowd of 4,988.

In the past few seasons Weymouth has drawn League scouts to watch their players and the following transfers have taken place. Graham Roberts to Spurs for £85,000, Andy Townsend to Southampton for £35,000, Tom Jones to Aberdeen for £30,000, Tony Agana to Watford for £20,000, and this season keeper Peter Guthrie signed from Blyth Spartans on a free transfer was sold to Spurs for £100,000.

The club are managed by Stuart Morgan now in his second spell with the club. After a period at the club as a player, he moved to Bournemouth as Assistant Manager and returned to Weymouth as Manager. During his time with the club the side won 3-2 at Cardiff in the F.A. Cup. Stuart then went to Torquay as Manager and after helping that club avoid relegation last season returned to assist in the move to the new stadium and rebuilt the side completely.

Next season the side are expected to challenge strongly for a Football League place, when this seasons pitch problems should have been overcome.

WEYMOUTH F.C. SEASON 1987 / 88



Photo courtesy of The Dorset Evening Echo

Weymouth Football Club's squad pictured at their new Wessex Stadium ground.

Standing - Bob Lucas (physio), Willie Gibson, Richard Bourne, Anniello Iannone, Paul Compton, Peter Guthrie, Andy Rowland, Peter Turrell, Dean Roberts, Ashley Doidge, John Clarke (trainer).

Seated - Simon Burman, Michael Greeno, Steve Claridge, Paul Arnold, Stuart Morgan (manager), Peter Conning, Everton Carr, Nicky Preston, Morgan Lewis.

Ascott Insurance

227 ELLIOTT STREET,
TYLDESLEY,
MANCHESTER M29 8DG

Tel: Atherton (0942) 876141 (6 lines)

Also at: 34 TWIST LANE, LEIGH, LANCS Tel: (0942) 608675

ALLIANCE & LEICESTER BUILDING SOCIETY

ALL TYPES OF MOTOR & GENERAL INSURANCES

UNIT TRUSTS - INVESTMENTS - PENSIONS - LIFE - ENDOWMENTS

WEYMOUTH PEN PICTURES

JOHN SMEULDERS (Goalkeeper) Recently signed from A.F.C. Bournemouth in his second spell with the club. Former Orient and Torquay United player.

STEVE PUGH (Utility) Signed from Exeter City in October 1987. Former Wolves and Torquay United player who has over 250 league appearances to his credit.

WILLIE GIBSON (Fullback) Closed Season signing from Nuneaton Borough where he has been ever present the last four seasons. Former Leicester City player.

SHAUN TEALE (Defender) Signed from Northwich Victoria in October 1987 for a five figure fee. Very talented and promising 23 year old who started his career at Everton.

PAUL COMPTON (Centre Half) Former A.F.C. Bournemouth and Torquay United player who has been signed in the closed season from Newport County. 250 League games to his credit.

PETER CONNING (Midfield) Another closed season signing from Rochdale. Former Altrincham player with stacks of non-league experience behind him.

TONY DAWSON (Midfield) Signed from Blyth Spartans in September 1987. Former West Bromwich Albion player who spent two seasons with Whitly Bay in the Northern Dryborough League. "The Terras" second signing from Blyth Spartans following goal keeper Peter Guthrie.

STEVE CLARIDGE (Striker) Signed two seasons ago from A.F.C. Bournemouth. Former Portsmouth player with Football League experience behind him.

ANNIELLO IANNONE (Utility) Club's longest serving player. Fast approaching 600 appearances for "The Terras" in his twelfth season.

GERRY NARDIELLO (Striker) Recently signed from Torquay United. Former Shrewsbury Town player with a prolific goal scoring record to his name.

MORGAN LEWIS (Utility) Closed season signing from AFC Bournemouth. Graduated through the Clubs' Youth Ranks to play 26 first team games for "The Cherries".

ANDY ROWLAND (Striker) Signed in the closed season from Exmouth Town where his football has been limited due to his University Studies during the past four years. Decided to join Weymouth in preference to several other Clubs who seeked his services.

CHRIS MYERS (Midfield) Another recent signing from Torquay United. The son of Cliff Myers a former prolific goal scorer with Yeovil Town and Torquay United.

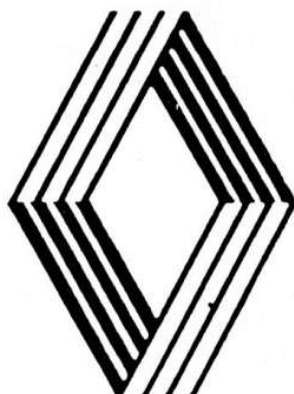
The DISTRICT GARAGE

THE DISTRICT GARAGE (WORSLEY) LTD.

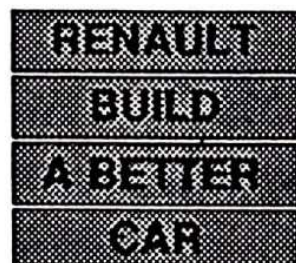
061 - 702 - 9900

WALKDEN MEMORIAL ROAD,
WALKDEN, WORSLEY,
MANCHESTER M28 5DQ

**RENAULT
DEALERS**



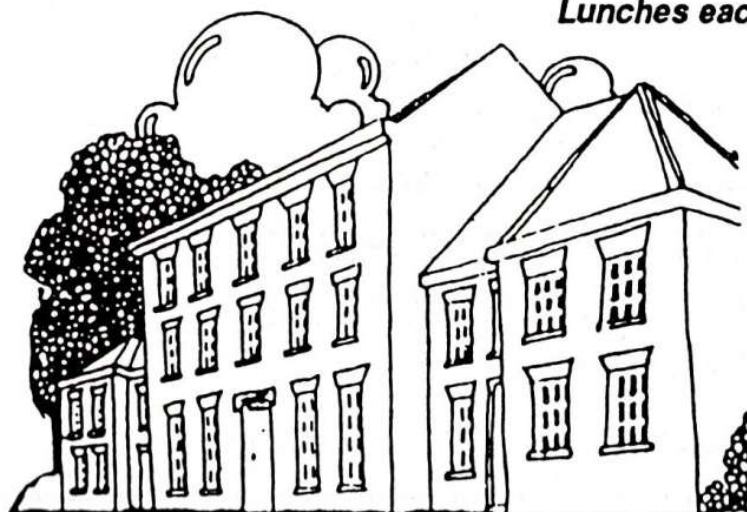
MANCHESTER ROAD EAST,
LITTLE HULTON, WORSLEY,
MANCHESTER M28 6LG



*Georgian
House*

Manchester Road, Blackrod

*Elegant surroundings • Excellent cuisine
Dinner each evening
Dinner Dances Friday and Saturday
Lunches each day except Saturday*



*For all enquiries and
table reservations
please telephone
Westhoughton 814598*

A MESSAGE FROM THE WEYMOUTH MANAGER

We feel very pleased, proud and privileged to be representing the G.M. Vauxhall Conference in today's G.M.A.C. final.

I do not know about everybody else connected to the club, but it was beyond my wildest dreams at the beginning of the season with just four players remaining at the club from the 1986/87 season that we would be here today and sitting in a comfortable league position, with an unbeaten home record, with just two games remaining and again succeeded in doing some very good business in the transfer-market.

With our attendances up some 150% it has been a very successful season and the icing can be put on the cake with a win today. Having taken on and beaten a side from every division in the competition I do not think anyone will argue that Weymouth F.C. are not worthy winners if we are successful this afternoon.

The game this afternoon, I can not believe, brings me head on in contention with an old acquaintance of mine, Les Rigby in the opposite corner. During our scouting duties I remember Les and I had the privilege of watching one of the greatest games we have witnessed a few seasons ago when Liverpool beat Everton 3-2 (what were two poor Non-League Managers watching that one for you might well all ask?) and if today's game is a quarter as good as that one I think Les will agree the fans are in for a treat.

Since losing the toss at Morecambe, so much has been said about the venue for the final, the sloping pitch and the facilities, but this is an occasion for both sets of fans and we both took the gamble of playing the final on our own grounds so there are no complaints from us. We are not getting paranoiac about grounds or pitches as I believe if we are good enough and better than the opposition we will win even if the game is played out on Victoria Road with the coats down!

My hope for this big occasion for both clubs is an entertaining game and a final to remember, a few more friends to make, and may the best team win.

My congratulations go to the match officials who above everyone else have been selected to control the game, I hope all goes well for you.

Best Wishes
STUART MORGAN

A. PARKER & L. BERRY (EXCAVATIONS) & Co.

BOLTON 73992 & 73622

NORTHWICH 74114

PLANT HIRE

**BULK EXCAVATION PRICES
GIVEN FOR LARGE & SMALL
CONTRACTS**

(SITE CLEARANCE - EARTH MOVING)

GROSVENOR WINDOWS

Manufacturers & Installers of:-

u.P.V.C WINDOWS

**Manchester Road
BOLTON**

**Telephone
391000**

Heritage Toys

LÉE LANE,
HORWICH, BOLTON,
LANCS. BL6 7BY

**GOING ON HOLIDAY THIS YEAR?
DON'T PAY OVER THE ODDS AT THE
SEASIDE....**



**Pocket Travel
Games,
Beach Balls,
Swimrings,
Skate Boards,
Goggles, Etc., Etc.**

**10% OFF!!
WITH THIS
ADVERT**

Offer does not apply to yellow ticket items.



TELEPHONE (0204) 68742
Open 9.30 a.m. - 5.00 p.m.
Monday to Saturday
(Closed all day Wednesday)

**FIRST-
CLASS
MAIL ORDER
SERVICE**



CONGRATULATIONS TO HORWICH R.M.I.

From

LOWE, TOWLER, LATHAM & Co.
(Chartered Accountants)

**Royal Bank of Scotland Chambers,
5 Market Street, Leigh, WN7 1ED.**

Tel: Leigh 603318

AUSTIN ROVER

FREIGHT ROVER

LAND ROVER

RANGE ROVER



LEASING? FINANCE? CASH? CONTRACT HIRE?

**At Lex Mead Bolton we have the expertise to fulfil your business
and private motoring needs.**

Tailor made deals to suit individual circumstances.

Ring for details now.

Licensed Credit Broker
Sales Open Mon-Wed 9.00-7.00
Late Night Thur & Fri till 8.00
Sat 9.00-5.00 Sun 11.00-5.00

Lex Mead Bolton Manchester Road **32241**

T. FRASER

BUTCHERS OF DISTINCTION



*Whatever your Sport,
You win with our Quality Meat*
For Muscle Building, Proteins and Vitamins.

272 RISHTON LANE,
GREAT LEVER,
BOLTON.



Tel: BOLTON 23278

William Hargreaves Transport Limited

*Specialists in Van Transport,
Warehousing and Distribution.*

Daily delivery service throughout
England, Ireland (North and South)
Scotland and Wales.



Head Office:
Manchester Road, Bolton
Tel: Farnworth 707100
Telex: 635470

MALROD INSULATIONS LTD.

Insulation for Industry

Steam Pipes

Vessels

Process Pipes

Sheet Metal Cladding

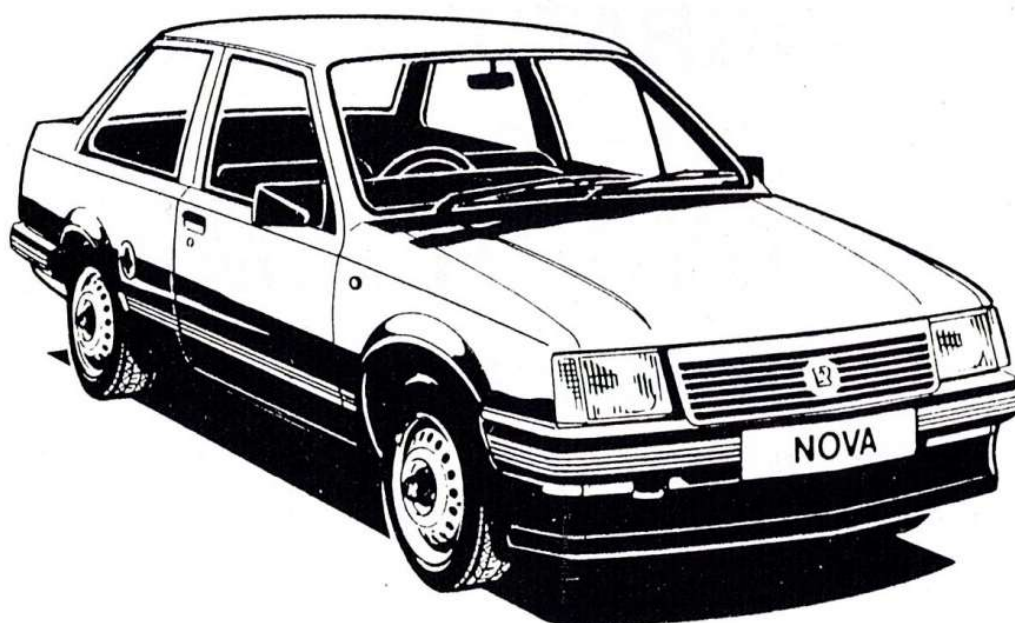
Glebe Mill, Library Street, Westhoughton, Bolton.
Tel: Westhoughton 811591



KIRKBY

Central

**FOR THE BEST DEALS IN THE
NORTH ON VAUXHALL-OPEL
RING 389999**



* From £31.76 per week
Flat Rate 6.5% A.P.R. 12.7%

NEW NOVA 2 DOOR BASE

KIRKBY CENTRAL LIMITED - BOLTON

Manchester Road, Bolton BL3 2NY
Telephone: (0204) 389999 Telex: 635682

IN-STEP SHOES

SHOES FOR ALL THE FAMILY

32 Winter Hey Lane
HORWICH Tel: 692753

HORWICH CAR PARTS

For all your car spares
Open 7 days a week
36 Winter Hey Lane
HORWICH Tel: 699563

SUN HARVEST SUNBEDS LTD.
Your local specialist for

**SUNBED SALES & HIRE
ULTRA FAST TANNING TUBES**

34 Winter Hey Lane
HORWICH Tel: 697173

The Home Care Centre

Your local
WALLPAPER & PAINT SPECIALIST
83-85 Winter Hey Lane
HORWICH Tel: 699390

**CONGRATULATIONS
TO
HORWICH R.M.I.
ON REACHING THE
G.M.A.C. CUP FINAL**

J & A JOHNSON

Your Friendly Newsagents

94 Winter Hey Lane
HORWICH Tel: 696126

DOREEN'S

Toiletries & Fancy Goods

69 Winter Hey Lane
HORWICH Tel: 699429

Fancy That

Greeting Cards & Stationers

23 Winter Hey Lane
HORWICH Tel: 696405

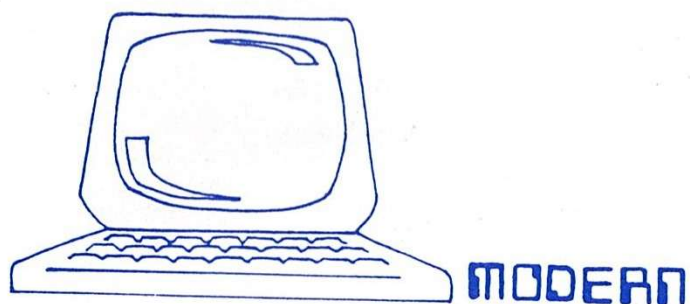
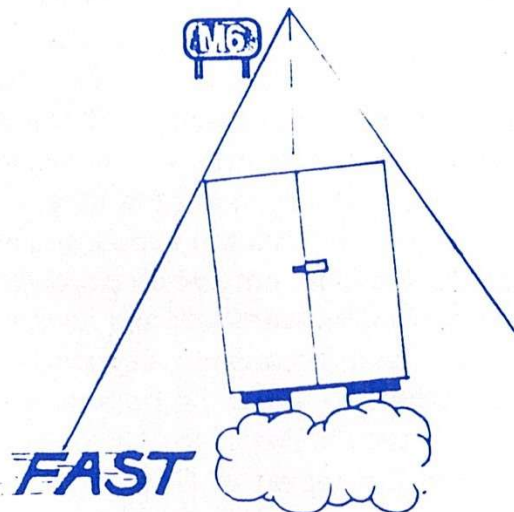
BOLTON ELECTRICAL SERVICES

**DECORATIVE
LIGHTING SPECIALISTS**

57 Winter Hey Lane
HORWICH Tel: 695681

OFFICE EQUIPMENT WORLD LTD

THE PROFESSIONAL TOUCH



***Holy Oake Road,
Walkden.***

Tel: 061-703-8444

MAIN SPONSOR TO HORWICH R.M.I.

FROM THE PRESS BOX

HORWICH R.M.I.'s appearance in today's G.M.A.C. final is a tribute to a club that has pulled itself up by its bootlaces.

At this time last year R.M.I.'s future was in doubt as they were forced to apply for re-election to The Northern Premier League. Having successfully done that it was clear that Manager Les Rigby faced a monumental task in rebuilding the side for this season's campaign. Today's game is evidence enough that the manager has more than achieved that along with the help of his 'backroom boys', Alan Kirkman, Lyndon Hesketh, Mal Richmond and all the junior coaches. Added to that are the efforts of the players and the work of the R.M.I. Committee, for the success has been built on teamwork - not just on the field but throughout the club.

And let's not forget the fans. R.M.I. may not be the best supported team in terms of numbers but the supporters who watch the side home and away are totally faithful to the club, not just on good days like today, but they were there last season when successes were few and far between. Fortunately they have had a lot more to cheer about this season, especially in the G.M.A.C. Competition.

Who can forget the runaround the team gave to Altrincham and the battling draw achieved in the teeth of a howling gale at Northwich. Or Brian Hart's dramatic winner in the replay at Grundy Hill. By the time Enfield came along it seemed Horwich were in the mood to take on anybody and that's the way it went with a handsome 3-1 win over the F.A. Trophy finalists.

And now today's the day. All the preparations are over, the last minute team talk given and it's up to the lads on the pitch. One thing is certain - they will be doing their best to bring the trophy to R.M.I. Let's help them do that by cheering them on to the final whistle.

PETER MENSFORTH
(Bolton Evening News)

MEET TODAY'S OFFICIALS

Referee Peter Jones began refereeing in 1975 and has been on the Football League Line since 1984, next season he is promoted to the Referees List. He is Secretary of the Loughborough Referees Society and was the Reserve Linesman for the England v Holland International in March. Peter is married and works for British Telecom, his hobbies include golf and all sports, he also enjoys walking his two dogs Dylan and Sam.

Linesmen Richard Lane and John Jeacock are both Southern League Referees and panel linesmen for the Central League and G.M.Vauxhall Conference. Richard who is an active member of the local County F.A. names Greyhound Racing as his hobby, while John is an enthusiastic Model Railway fan.



STANDISH PRINT Co.

PERSONAL & COMMERCIAL PRINTING

COMPLETE OFFICE SUPPLIES

PHOTOCOPYING & FAX SERVICE

CHURCH STREET, STANDISH, WIGAN

Tel: STANDISH (0257) 427144

NORTHERN PREMIER LEAGUE

Final League Table Season 1987 / 88

	P	W	D	L	F	A	PTS
CHORLEY	42	26	10	6	78	35	88
HYDE UNITED	42	25	10	7	91	52	85
CAERNARFON TOWN	42	22	10	10	56	34	76
MORECAMBE	42	19	15	8	61	41	72
BARROW	42	21	8	13	70	41	71
WORKSOP TOWN	42	20	11	11	74	55	71
BANGOR CITY	42	20	10	12	73	55	70
RHYL	42	18	13	11	70	42	67
MARINE	42	19	10	13	67	45	67
FRICKLEY ATHLETIC	42	18	11	13	61	55	65
WITTON ALBION	42	16	12	14	61	47	60
GOOLE TOWN	42	17	9	16	71	61	60
HORWICH R.M.I.	42	17	9	16	46	42	60
SOUTHPORT	42	15	12	15	43	48	57
SOUTH LIVERPOOL	42	10	19	13	56	64	49
BUXTON	42	11	14	17	75	77	47
MOSSLEY	42	11	11	20	54	75	44
GATESHEAD	42	11	7	24	52	71	40
MATLOCK TOWN	42	10	8	24	58	89	38
GAINSBOROUGH TRINITY	42	8	10	24	38	81	34
OSWESTRY TOWN	42	6	10	26	44	101	28
WORKINGTON TOWN	42	6	3	33	28	113	21

TODAYS TEAMS

HORWICH R.M.I.

Blue & White Striped Shirts
Blue Shorts
Blue Stockings

1. Michael ALLISON
2. Brian HART (Capt.)
3. Jimmy MITCHELL
4. Paul BOOTH
5. Lee HOWARTH
6. Jon SENIOR
7. Chris WALMSLEY
8. Ian STREET
9. Phil POWER
10. Faz PAGE
11. Neil McLACHLAN
12. Glen WALKER
14. Mark SCHOFIELD

WEYMOUTH

Claret Shirts
White Shorts
White Stockings

1. John SMEULDERS
2. Steve PUGH
3. Willie GIBSON (Capt.)
4. Shaun TEALE
5. Paul COMPTON
6. Peter CONNING
7. Tony DAWSON
8. Steve CLARIDGE
9. Anniello IANNONE
10. Gerry NARDIELLO
11. Morgan LEWIS
12. Andy ROWLAND
14. Chris MYERS

Referee

P. JONES (Loughborough)

Linesmen

R. LANE (Leicester) Red Trim
J. JEACOCK (Leicester) Yellow Trim

Todays Match Ball Sponsor
VIKTOR FOOTBALLS
OF HUDDERSFIELD

Programme designed and published by
STANDISH PRINT Co. Tel: (0257) 427144